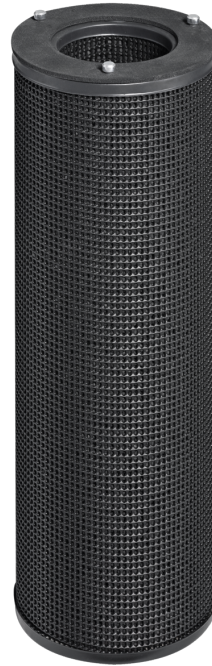


Construction STA

Activated carbon filters

ACFC



For the adsorption of gaseous odorous substances and contaminants

To improve the indoor air quality in offices, hotels, and airports

- Available with different carbon types for various areas of application and operating conditions
- Cylinder made of perforated sheet steel, stainless steel, or plastic, available in different lengths
- Plastic cylinders are completely corrosion-resistant; cartridges are completely incinerable and hence easily disposed of
- Easy fitting and secure sealing due to 3-point bayonet fixing
- Fitting into mounting plates (type MP) for filter walls
- Fitting into universal casings (type UCA) for duct installation

General information	2	Order code	5
Technical data	3	Dimensions	6
Specification text	4		

General information

Application

- Filter cartridge for the adsorption of gaseous odorous substances and contaminants as well as hydrocarbons or traces of inorganic compounds from the supply and recirculated air

Special features

- Cylinder with profiled base and cover plates
- Upon request, filter cartridges can be provided with impregnated carbon types for special applications and operating conditions, e.g. for the adsorption of sulphur and chlorine compounds

Nominal sizes

- D × H [mm]

Construction

- PLA: Casing made of plastic
- GAL: Casing made of galvanised steel
- STA: Casing made of stainless steel

Useful additions

- Mounting plates (MP)
- Universal casing (UCA)

Construction features

- 3-point bayonet fixing
- Flat seal as standard

Materials and surfaces

- Activated carbon sticks
- Casing made of plastic, galvanised sheet steel, or stainless steel

Technical data

Parameter	Value	Method
CTC (carbon tetrachloride adsorption) [%]	> 60	ASTM D3467
Toluene adsorption [%]	> 14	–
Water content [%]	< 3	ASTM D2867
Ash content [%]	~ 8	ASTM D2866
Compacted dry density [g/l]	480 – 500	ASTM D2854
BET surface [m ² /g]	> 1100	BET-N ₂
Hardness [%]	> 99	ASTM D3802
Iodine number [mg/g]	> 99	ASTM D4607
Ignition point [°C]	> 375	ASTM D3466
Pellet diameter [mm]	3	–
Max. operating temperature [°C]	50	–
Maximum relative humidity [%]	70	–

Specification text

This specification text describes the general properties of the product. Texts for variants can be generated with our Easy Product Finder design program.

Specification text

Activated carbon filter cartridges for the adsorption of gaseous odorous substances and contaminants as well as hydrocarbons or traces of inorganic compounds from the supply and recirculated air. Easy fitting and secure sealing due to 3-point bayonet fixing. Activated carbon filter cartridges available in lengths of 250, 450 and 600 mm. Flat seal as standard.

Special features

- Cylinder with profiled base and cover plates
- Upon request, filter cartridges can be provided with impregnated carbon types for special applications and operating conditions, e.g. for the adsorption of sulphur and chlorine compounds

Materials and surfaces

- Activated carbon sticks
- Casing made of plastic, galvanised sheet steel, or stainless steel

Construction

- PLA: Casing made of plastic
- GAL: Casing made of galvanised steel
- STA: Casing made of stainless steel

Sizing data

- Noxious gas
- Volume flow rate [m³/h]
- Contact time [s]
- Differential pressure [Pa]
- Nominal size [mm]



Order code

ACFC – PLA / 145 × 450
| | |
1 2 3

1 Type

ACFC Activated carbon filter cartridge

GAL Casing made of galvanised steel

STA Stainless steel casing

2 Construction

PLA Casing made of plastic

3 Nominal size [mm]

D × H

ACFC-PLA/145×450

Construction

Plastic casing

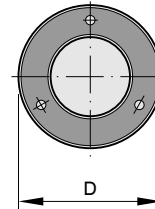
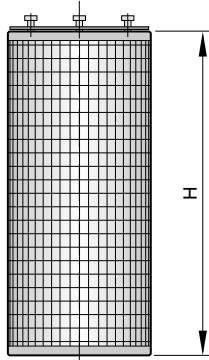
Nominal size

145 × 450 mm

Dimensions

ACFC

ACFC


ACFC-PLA
Product specific data

①		②		③	④	⑤	⑥	⑦
D [mm]	H [mm]	qv [l/s]	qv [m³/h]	Pa	s	l	mm	kg
145	250	24	85	80	0.1	2.4	26	1.5
145	450	42	150	80	0.1	4.3	26	2.6
145	600	56	200	120	0.1	5.7	26	3.4

① Nominal size ② Nominal volume flow rate ③ Differential pressure ④ Contact time ⑤ Activated carbon volume ⑥ Layer thickness ⑦ ~ Weight

ACFC-GAL/STA
Product specific data

①		②		③	④	⑤	⑥	⑦
D [mm]	H [mm]	qv [l/s]	qv [m³/h]	Pa	s	l	mm	kg
145	250	24	85	70	0.1	2.4	26	2
145	450	42	150	70	0.1	4.3	26	3.7
145	600	56	200	95	0.1	5.7	26	5

① Nominal size ② Nominal volume flow rate ③ Differential pressure ④ Contact time ⑤ Activated carbon volume ⑥ Layer thickness ⑦ ~ Weight